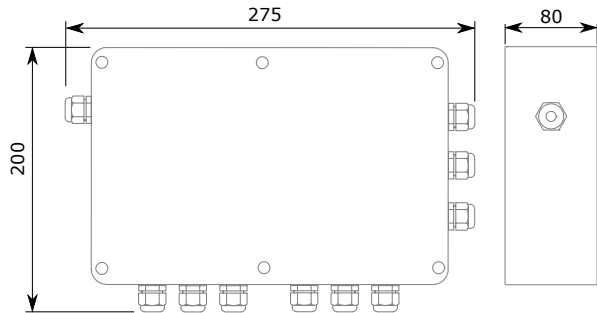


RX – signal splitter

DIMENSIONS



GENERAL INFORMATION

Splitter of control signal for connection of units with 3-step fans. It is possible to combine max. 3 splitters RX, so that the single controller can control up to 36 units simultaneously.

- works with 6 units LEO FB 25|45|65|95 V; LEO INOX...V; ELiS T-W/N/E
- works with 12 units LEO FB 10|20|30 V; LEO FS...V
- possibility to control 230V ON/OFF valves;
- possibility to connect HMI programmable controller or TS fan speed controller;
- connection of max 36 units via 3 splitters RX operating in relation to one control signal;
- in case of ELiS T air curtains, splitter enables connection of DCet/DCm door sensors.

TECHNICAL DATA

operating temperature range	0 ÷ 40 [°C]
protection degree	IP54
installation	on the wall
max. wire diameter	2,5 mm ²
weight	0,95 kg
colour	grey

INSTALLATION AND USE

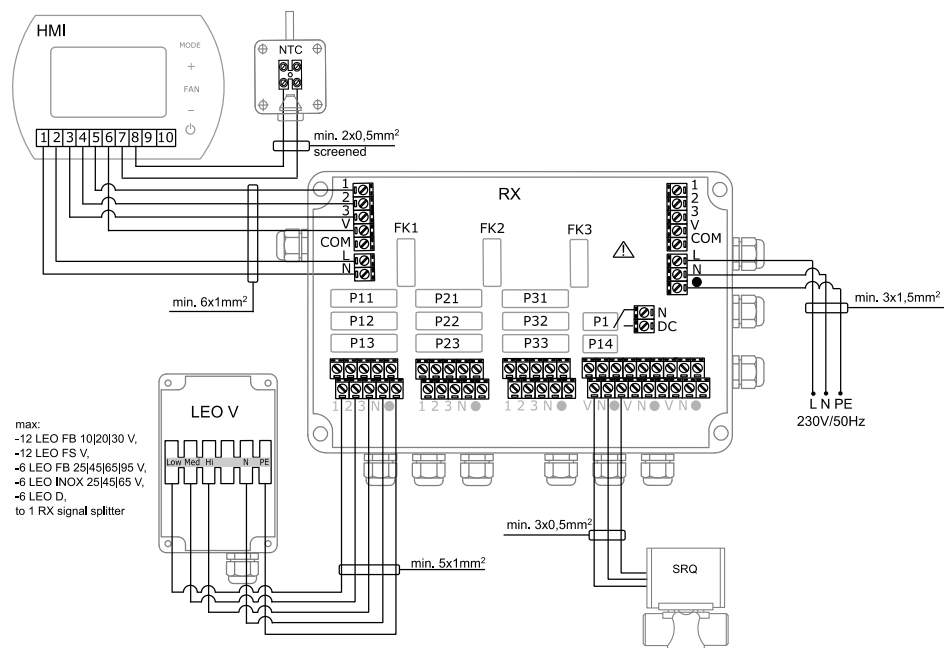
WARNING!

Before starting any installation works, disconnect the power supply from the splitter.

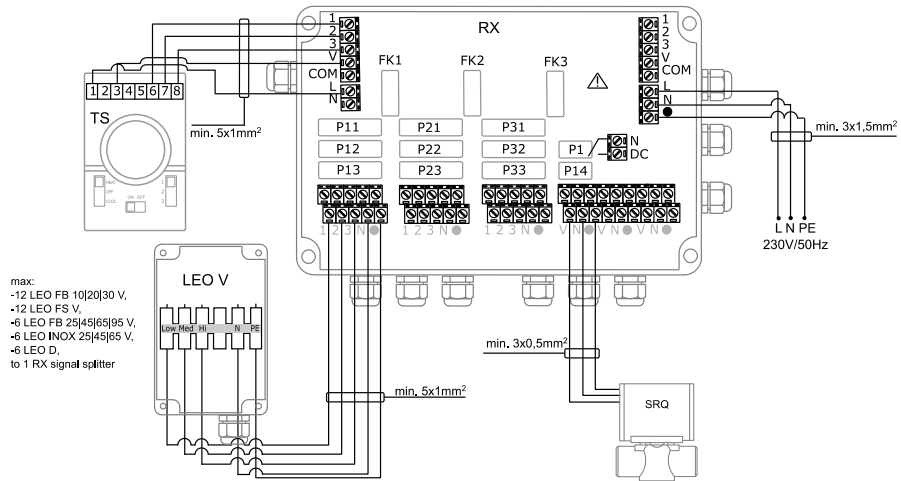
- signal splitter can be installed only indoors
- wires transmitting control signal should be ended with muffs

Wire diameter should be selected by the designer.

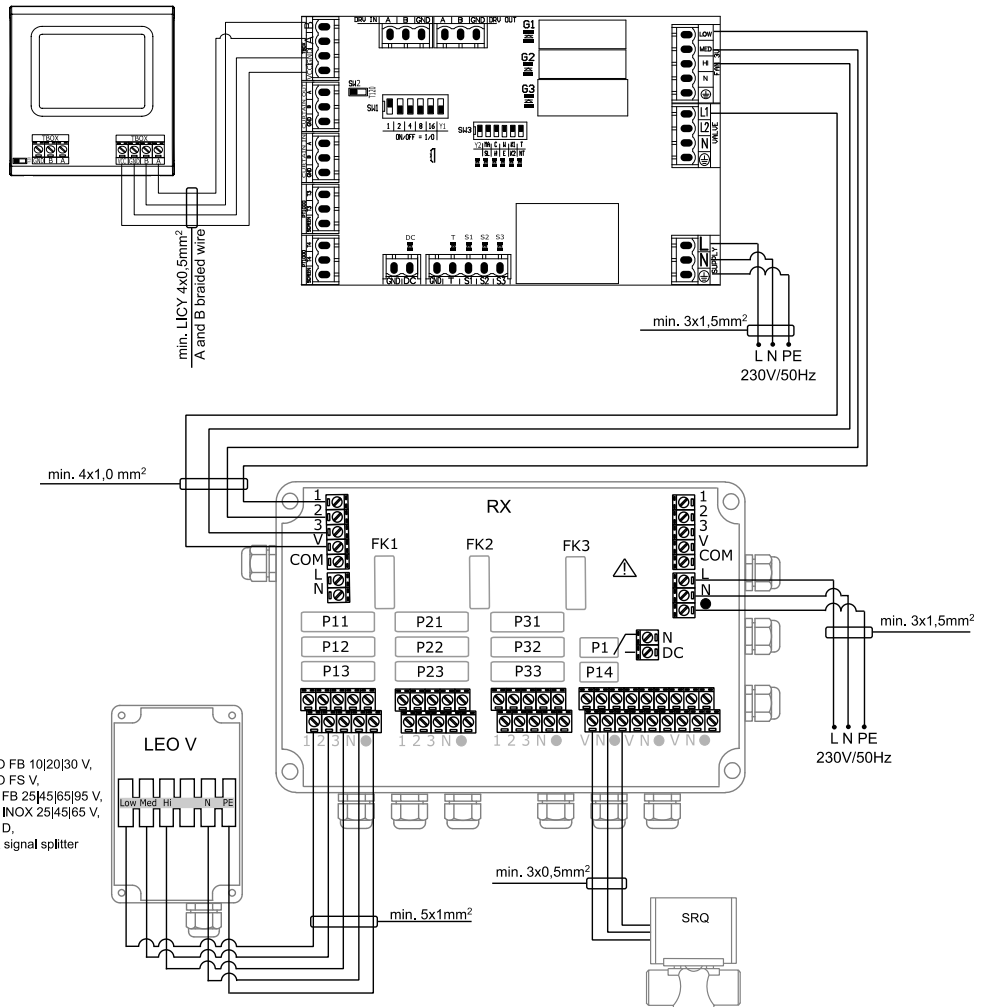
CONNECTION DIAGRAM HMI + RX + LEO V



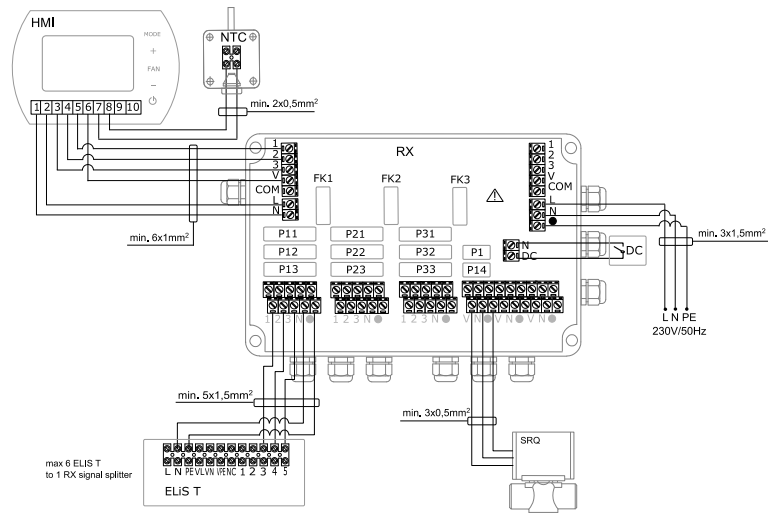
CONNECTION DIAGRAM TS + RX + LEO V



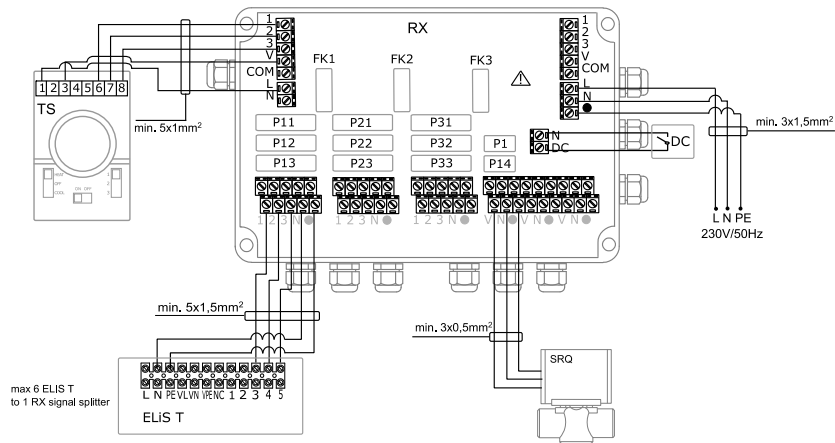
CONNECTION DIAGRAM T-box + RX + LEO V



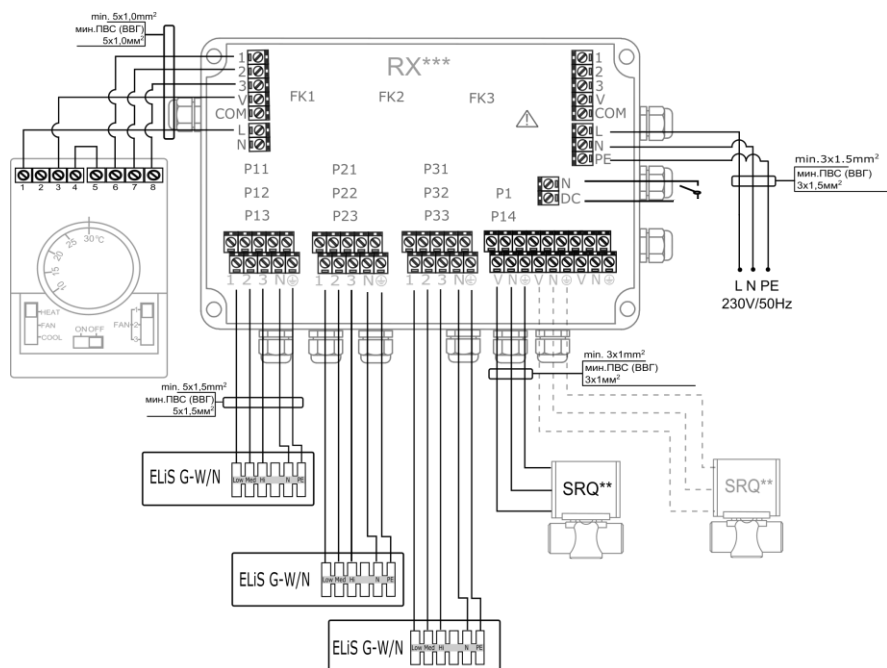
CONNECTION DIAGRAM HMI + RX + ELIS T



CONNECTION DIAGRAM TS + RX + ELIS T



CONNECTION DIAGRAM TS + RX + ELIS G/W/N



CONNECTION DIAGRAM TS + RX + ELIS G

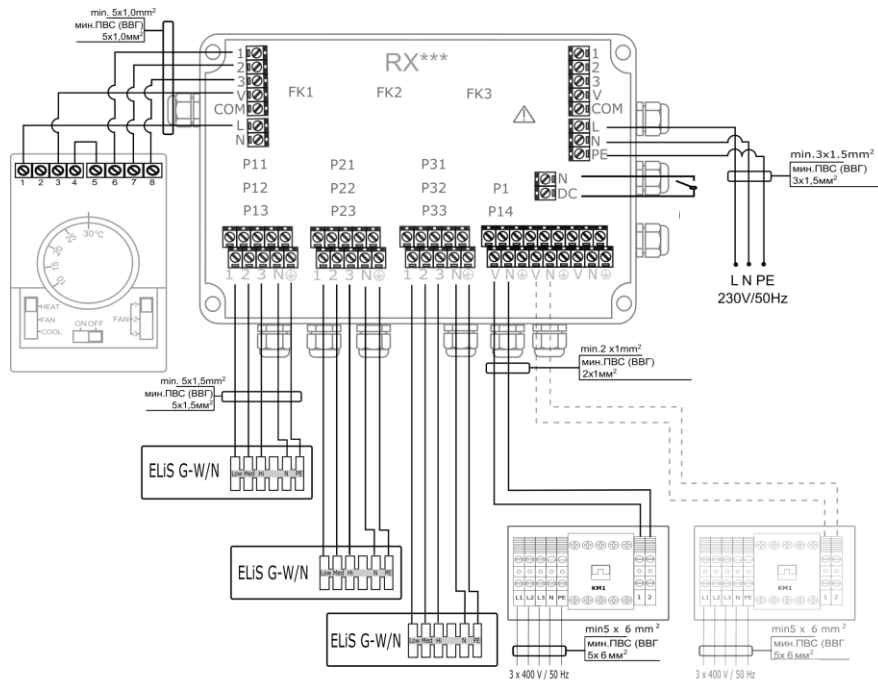
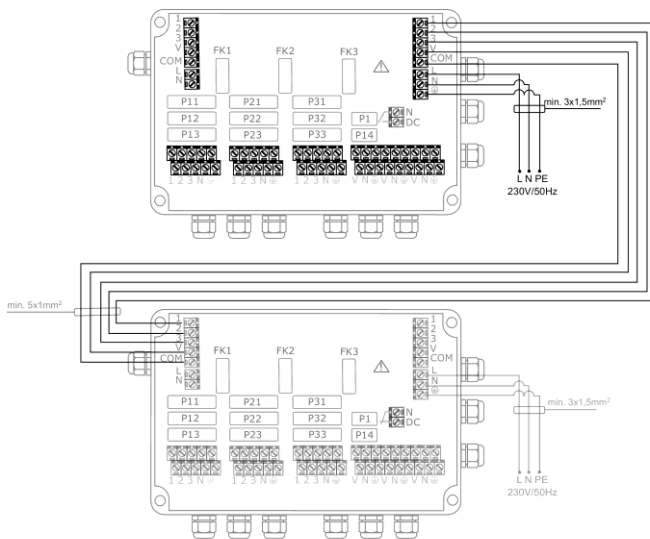


DIAGRAM OF COMBINING THE RX SPLITTERS



It is possible to combine max. 3 splitters RX.

N-DC connector should be open in first splitter RX.

N-DC should be closed in second and third splitter RX.

Door switch should be connected only to the first splitter RX.

